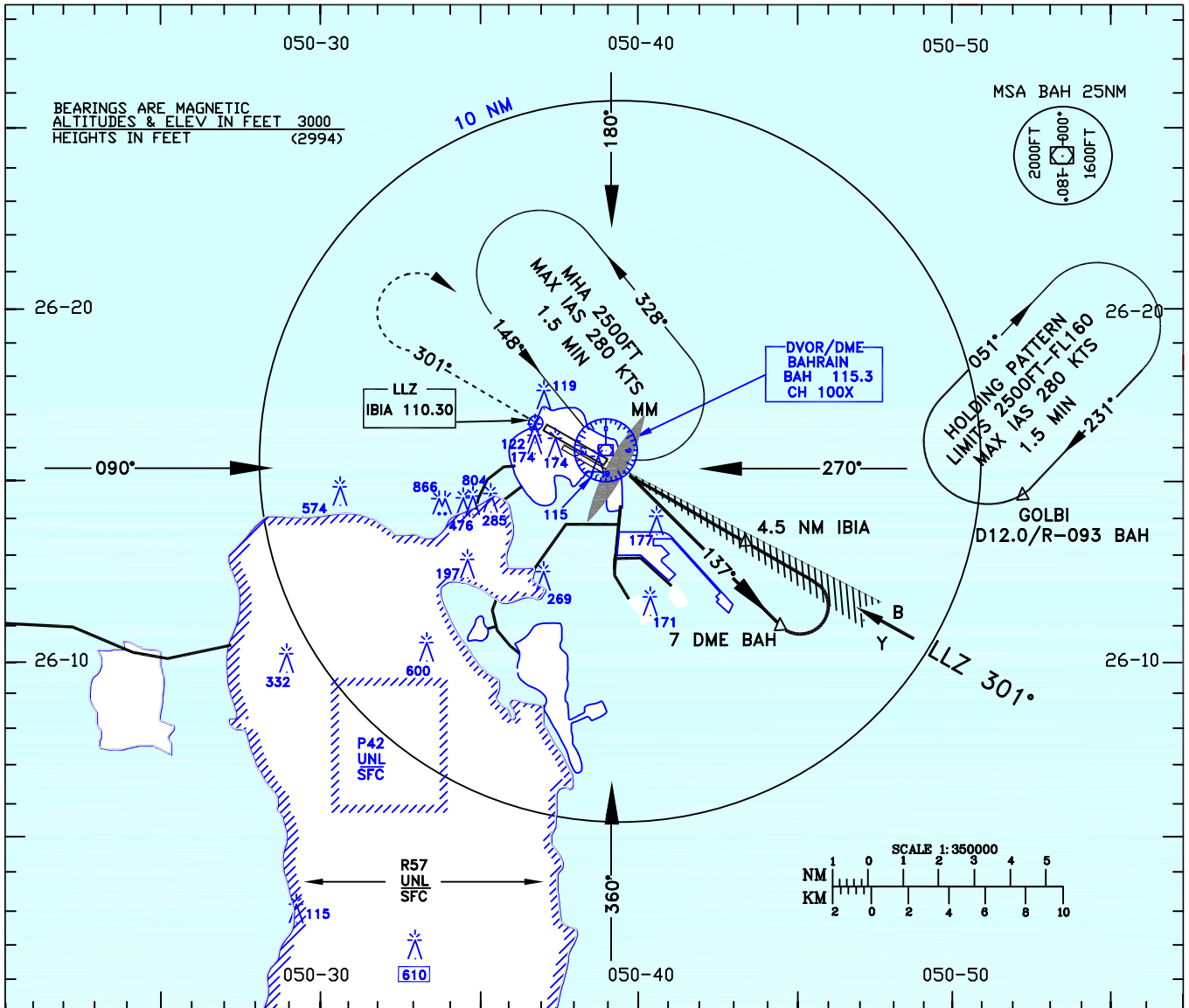


**INSTRUMENT APPROACH CHART - ICAO**

AD ELEV 6 FT  
HEIGHTS RELATED TO THR RWY 30R  
VAR 2.0° E

APP	127.85	243.00
TWR	121.50	344.00
GMC	121.50	243.00
	121.67	121.85

**BAHRAIN INTL. ILS/DME RWY 30R CAT A/B ACFT**

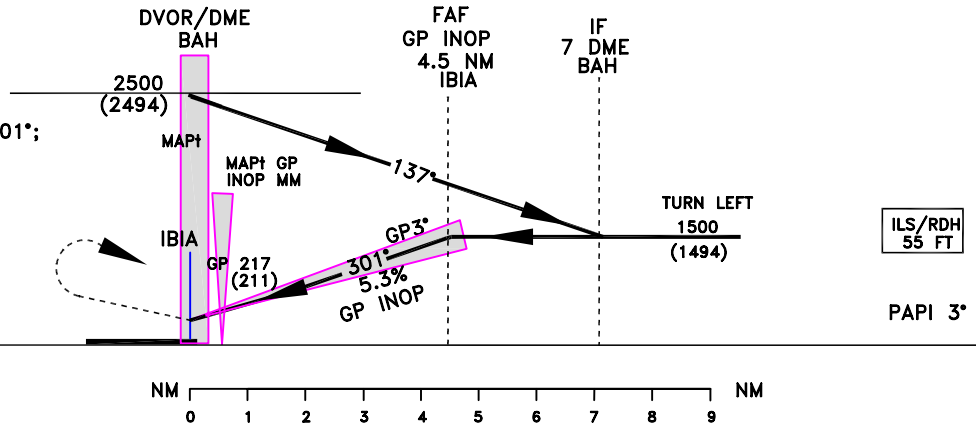


TA 13000 FT

Missed Approach  
Climb to 2500FT track 301°;  
when level turn right to  
rejoin the hold;  
or as instructed by ATC.

ELEV 6 FT

(THR RWY 30R)



OCA(OCH)		A	B			
Straight in Approach	ILS CAT1	181(175)	193(187)			
	GP INOP	309(303)				
Circling (North only)		420(414)	500(494)			

NO CIRCLING AUTHORIZED BTN RADIALS 180° AND 260° CLOCKWISE

GP INOP Approach: MAPt at MM

Speed	KT	80	100	120	140	160	180
Time	MIN:SEC	3:23	2:42	2:15	1:56	1:41	1:30
Rate of descent	FT/MIN	428	535	642	749	856	963

Amendment: New Holding GOLBI established; New Obstacles added; MSA changed.